

The boiler scaffold

Foldable scaffold specially
designed for confined areas

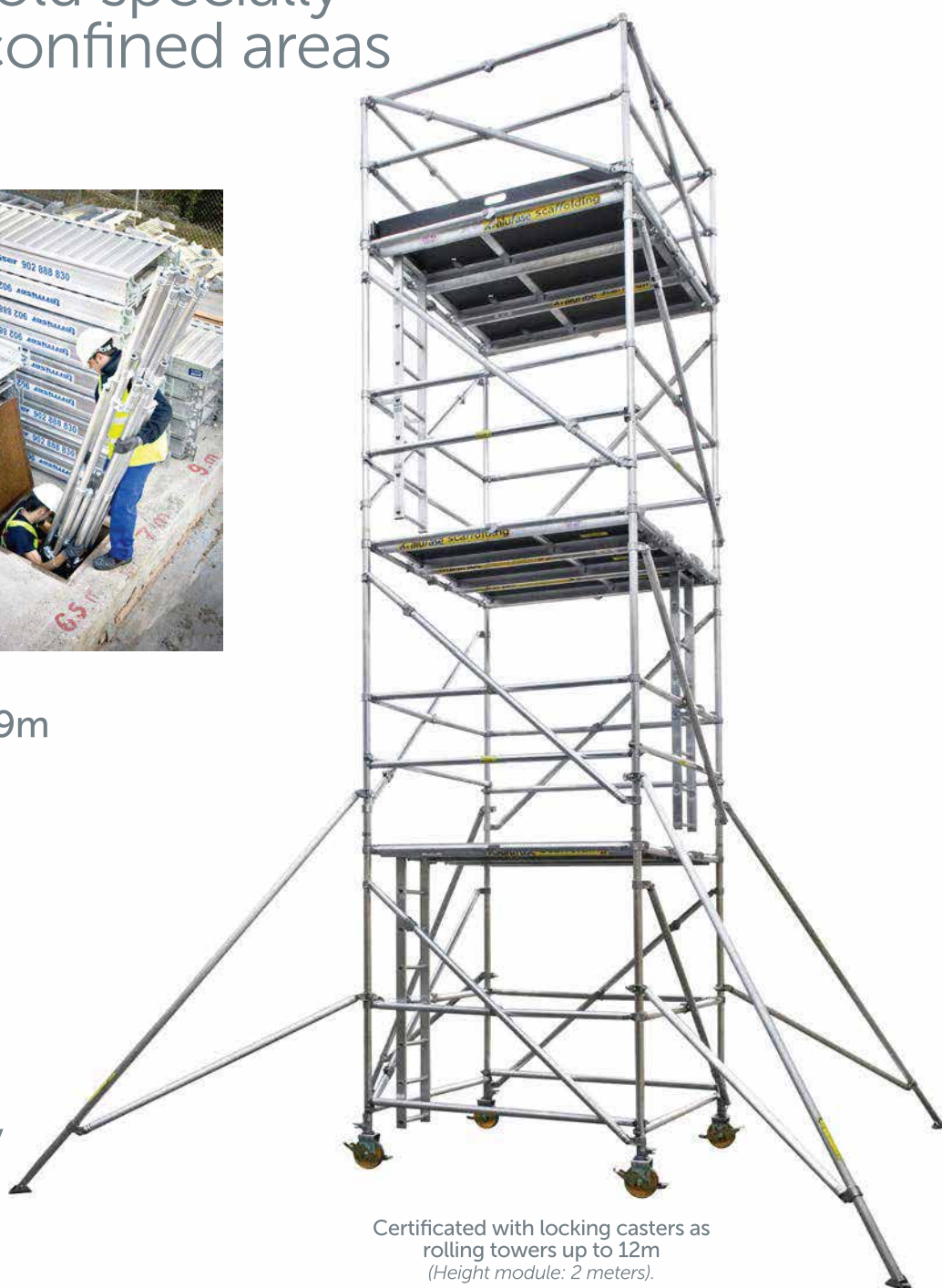


Two different sizes:

1,83 x 1,83m y 1,29 x 1,29m
(3 or 2 platforms per level).

alufold

The right solution, easy, fast
and simple. Designed specially
to be introduced through
manholes for maintenance
of tanks, boilers or any other
confined places.



Certificated with locking casters as
rolling towers up to 12m
(Height module: 2 meters).

alufold

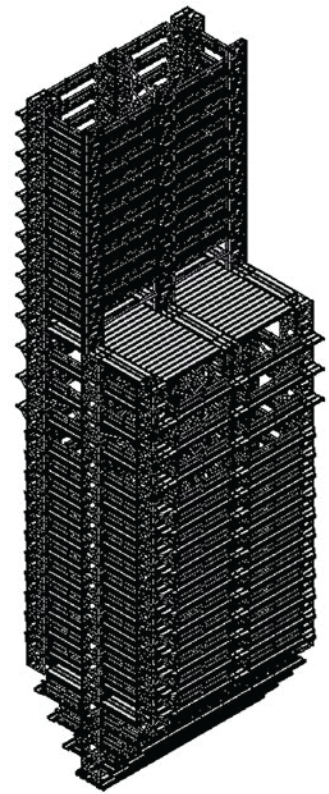
The right solution for boilers

Only 1/3 of its equivalent steel scaffolding weight and less than 1/5 of time of erecting, Alufold makes simple, safe and much faster scaffolding on tanks and boilers.



PART LIST

| PART N | DESCRIPTION | WEIGHT |
|---------|-----------------------------------|---------------|
| 190/193 | BASE MODULE 1,29m/1,83m | 35Kg/38Kg |
| 191/194 | INTERMEDIATE MODULE 1,29m/1,83m | 35,5 Kg/39Kg |
| 166/167 | GUARDRAIL MODULE 1,29m/1,83m | 30Kg/33Kg |
| 318/315 | PLATFORM 1,29m/1,83m (wide 56 cm) | 9Kg/12Kg |
| 808 | LADDER | 6Kg |
| 208/209 | HORIZONTAL 1,29/1,83 | 1,5Kg/2Kg |
| 507/509 | TOEBOARD LONG 1,83/1,29 | 1,5Kg/2Kg |
| 508/510 | TOEBOARD WIDE 1,29/1,83 | 1,5Kg/2Kg |
| 432/433 | OUTRIGGER/ REINFORCED | 5,22Kg/6,80Kg |



700 MW BOILER ASSEMBLY TIME: 5 DAYS



SPAIN

Ctra. M-114, Km 1
28864 Ajalvir-Madrid (Spain)
Tel: +34 91 884 4906
Fax: +34 91 884 4892

USA

6060 Brookglen Suite B
Houston, TX 77017
Tel: +1 (713) 910 5600
Fax: +1 (713) 910 5601



905.668.7236
www.apmsystem.ca





APM SYSTEM

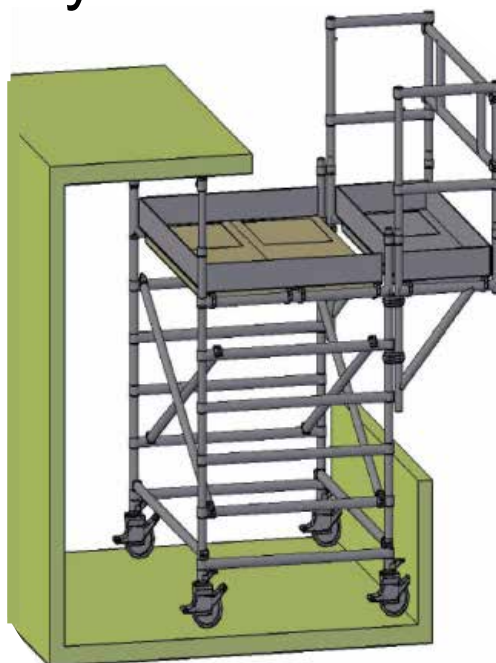
AERIAL PLATFORM MAINTENANCE

**ALUFOLD:
THE ULTIMATE BOILER SCAFFOLD SOLUTION**
Designed for manholes, boilers and confined spaces.

Aircraft Stands



Hydro Dams



Custom Projects



It folds, it is easy, safe and fast to set up,
add module pieces (pre-engineered), no tools or
special skills required, making this your lightest
and fastest solution.

T 905 668 3276

F 905 668 7276

E info@apmsystems.ca

apmsystems.ca

**Reduces 60% weight
and 70% setup time!**

905.668.7236
www.apmsystem.ca

**Canadian Distributor of
Aluminum and Fibreglass scaffold**